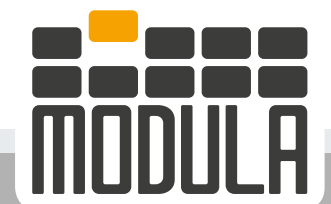




# Modula OnePick

Think Vertical, Think Modula

OUR PRODUCTS ARE  
★ **MADE IN USA** ★  
From US & Imported Components



# Are you looking for more from a vertical warehouse?

## Sophistication in Automation

OnePick is the Vertical Lift Module that works without an operator because its bay is completely automated!

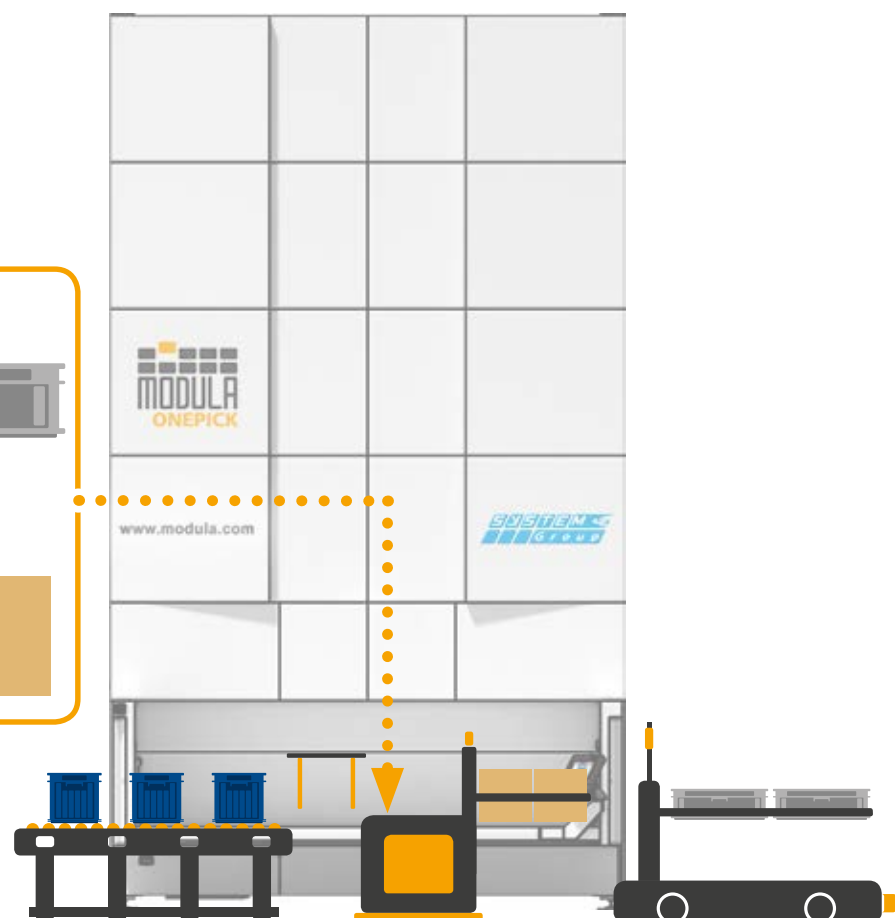
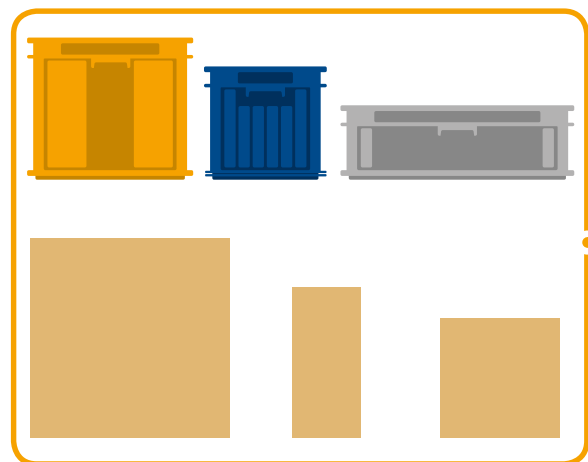
OnePick integrates seamlessly with material handling systems like conveyor belts, rollers, AGVs, AGCs and others.

With OnePick, picking is fully automated and safe.

Thanks to its specially designed gripper it handles the products stored in boxes or bins without the need of operators, antropomorphic robots or other external handling systems.

OnePick is the ideal system for stocking in the same warehouse boxes, bins and containers with:

- Different weights
- Different volumes
- Different sizes
- Different dimensions



## What it is and how it works

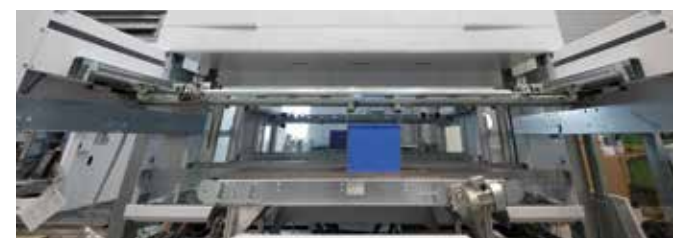
OnePick is a Modula Lift (VLM) with a special picking bay equipped with a cartesian robot moving on 2 axis (X and Y).

The bay has a set unit height so it integrates seamlessly and automatically with rollers, conveyors, belts and other systems.

In the OnePick bay, a grip device retrieves the box and places it in front of the unit on an external surface.

Like a Modula Lift, it:

- Saves floor space
- Stores items safely
- Automatically manages inventory
- Tracks items
- Saves picking time
- Prevents retrieval and delivery phase errors



### Technical features

- Unit height: from 130" to 634"
- Unit height increment: 7.87"
- Tray storage pitch: 1"
- Tray widths: from 74.8" to 161.41"
- Tray depths: 25.75" & 33.74"
- Net tray payload options: 551 - 1102 - 1653 - 2182 lbs
- Total net payload: up to 198,416 lbs
- Number of bays: up to 3 internal or external
- Load-bearing structure in zinc-coated steel
- Eagle steel-reinforced toothed belt transmission
- Elevator guiding system with 6 HDPE rollers per side
- Multiple payload tray management

Maximum load unit height: **14.17"**

Maximum load unit weight: **55 lbs** (depending on the box dimensions)

Option for opposed bays

Dynamic tray height storage

Retrofit possible on existing Modula Lifts (New Generation)



# Unexpected spaces!

## Retrieval from multiple rows

The OnePick warehouse retrieves from multiple rows in the same tray. An advanced system synchronizes the grip device and the tray movements. This makes box retrieval extremely precise, even when the tray has a random geometric layout and/or on more than one row.

No matter what the tray layout is, it is perfectly reachable. OnePick technology translates into tray space optimization, the entire surface is used, even when the boxes have different geometry, volumes or shapes. And there's more thanks to the Modula warehouse dynamic tray height storage, the spaces between trays can be optimized and boxes and containers of different unit heights can be stored with great flexibility and efficiency.

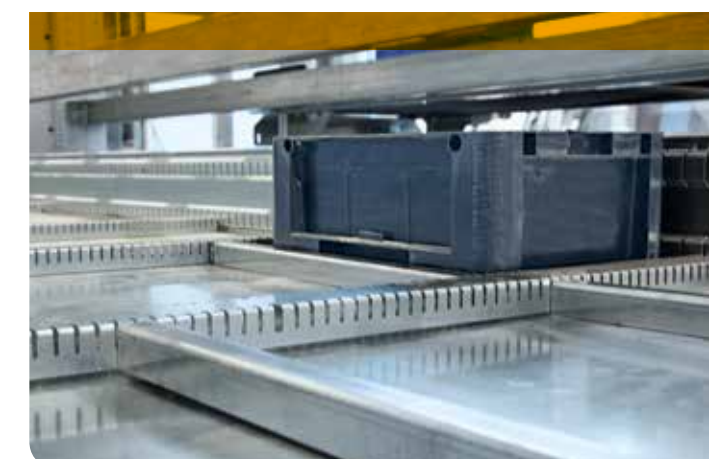
**Zero errors. No waste. Maximum efficiency.**



## Never before seen flexibility!

OnePick trays are fitted with special accessories, like partitions and dividers to organize the trays to store a number of different boxes and containers. Thanks to these accessories, the tray layout is incredibly flexible and easy to modify. The dynamic tray height storage combined with 1" tray adjustability allows for an optimized usage of the VML's internal volume. At every material intake, the VLM controls the height of the material, checks the available spaces inside the warehouse and selects the perfect storage location in order to minimize the internal space waste.

**No more useless gaps between the stored trays!**





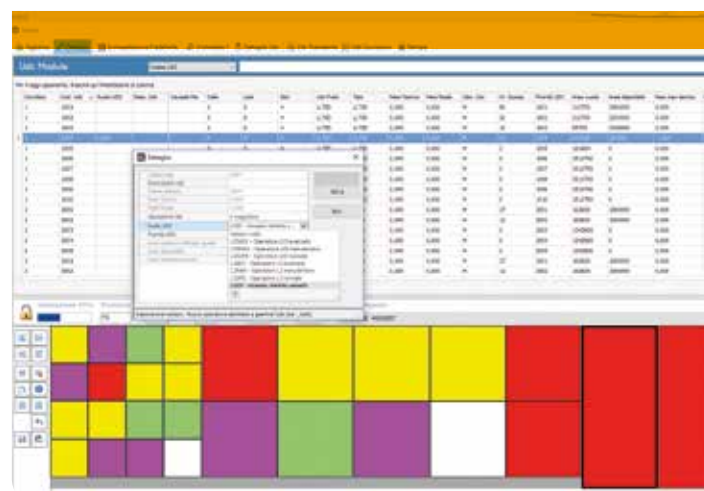
# Like a smart vending machine

## Smarter software

The OnePick combined with a handling system allows the installation of a VLM even in hard to reach, awkward areas, or areas a long way from the station where the items are needed.

OnePick requires Modula WMS software which, among other functions, maps the containers position in the tray. The grip device is guided by the defined mapping and automatically retrieves the selected items.

Any material handling system is then able to carry them to another even remote station. Ideal for assembly lines, work islands, but also pick and pay or pick-up applications for e-commerce, self-service or take out and automated stores.



## Our models

### MA & MA-D



91.22 in

Model	Tray Width (in)	Tray Depth (in)	Tray Wall Height (in)	Net Tray Payload (lbs)	Unit Footprint (Width x Depth) (in)
MA25	74.80	25.75	1.77 / 2.75 / 4.72	551	91.22 x 136.69
MA25D	74.80	33.74	1.77 / 2.75 / 4.72	551	91.22 x 168.66
MA50	74.80	25.75	2.75 / 4.72	1,102	91.22 x 136.69
MA50D	74.80	33.74	2.75 / 4.72	1,102	91.22 x 168.66
MA75	74.80	25.75	2.75 / 4.72	1,653	91.22 x 136.69
MA75D	74.80	33.74	2.75 / 4.72	1,653	91.22 x 168.66
MA1000	73.23	25.75	4.72	2,200	91.22 x 136.69
MA1000D	73.23	33.74	4.72	2,200	91.22 x 168.66

### MC & MC-D



114.84 in

Model	Tray Width (in)	Tray Depth (in)	Tray Wall Height (in)	Net Tray Payload (lbs)	Unit Footprint (Width x Depth) (in)
MC25	98.42	25.75	1.77 / 2.75 / 4.72	551	114.84 x 136.69
MC25D	98.42	33.74	1.77 / 2.75 / 4.72	551	114.84 x 168.66
MC50	98.42	25.75	2.75 / 4.72	1,102	114.84 x 136.69
MC50D	98.42	33.74	2.75 / 4.72	1,102	114.84 x 168.66
MC75	98.42	25.75	2.75 / 4.72	1,653	114.84 x 136.69
MC75D	98.42	33.74	2.75 / 4.72	1,653	114.84 x 168.66
MC1000	96.85	25.75	4.72	2,200	114.84 x 136.69
MC1000D	96.85	33.74	4.72	2,200	114.84 x 168.66

### MX & MX-D



138.46 in

Model	Tray Width (in)	Tray Depth (in)	Tray Wall Height (in)	Net Tray Payload (lbs)	Unit Footprint (Width x Depth) (in)
MX25	122.05	25.75	1.77 / 2.75 / 4.72	551	138.46 x 136.69
MX25D	122.05	33.74	1.77 / 2.75 / 4.72	551	138.46 x 168.66
MX50	122.05	25.75	2.75 / 4.72	1,102	138.46 x 136.69
MX50D	122.05	33.74	2.75 / 4.72	1,102	138.46 x 168.66
MX75	122.05	25.75	2.75 / 4.72	1,653	138.46 x 136.69
MX75D	122.05	33.74	4.72	1,653	138.46 x 168.66
MX1000	120.47	25.75	4.72	2,200	138.46 x 136.69
MX1000D	120.47	33.74	4.72	2,200	138.46 x 168.66

### ML & ML-D



177.83 in

Model	Tray Width (in)	Tray Depth (in)	Tray Wall Height (in)	Net Tray Payload (lbs)	Unit Footprint (Width x Depth) (in)
ML25	161.41	25.75	2.75 / 4.72	551	177.83 x 136.69
ML25D	161.41	33.74	2.75 / 4.72	551	177.83 x 168.66
ML50	161.41	25.75	4.72	1,102	177.83 x 136.69
ML50D	161.41	33.74	4.72	1,102	177.83 x 168.66
ML75	161.41	25.75	4.72	1,653	177.83 x 136.69
ML75D	161.41	33.74	4.72	1,653	177.83 x 168.66
ML1000	159.84	25.75	5.71	2,200	177.83 x 136.69
ML1000D	159.84	33.74	5.71	2,200	177.83 x 168.66

# Modula World



Modula is present in 5 continents with dealers and branches located in over 50 countries.

**Modula Inc.**  
**US HEADQUARTERS**  
90 Alfred A. Plourde Parkway  
Lewiston, ME 04240 - USA  
Tel. + 1.207.440.5100  
Fax + 1.207.786.0271  
[info.usa@modula.com](mailto:info.usa@modula.com)  
[www.modula.com](http://www.modula.com)

**Modula S.p.A**  
**ITALY HEADQUARTERS**  
Via San Lorenzo, 41  
42013 Salvaterra di Casalgrande (RE) - ITALY  
Tel. +39 0522 774111  
Fax +39 0522 774175  
[info@modula.com](mailto:info@modula.com)  
[www.modula.com](http://www.modula.com)

